

REISET
INDUSTRIES Inc.

LANDSCAPER

P96H & P96TG
OPERATOR & PARTS MANUAL



<h1><u>TABLE OF CONTENTS</u></h1>	
-----------------------------------	---

<u>ITEM</u>	<u>PAGE</u>
INTRODUCTION	2
SAFETY	3 - 4
DAILY CHECK LIST	5
OPERATION INSTRUCTIONS	5
OPTIONAL ATTACHMENTS	6 - 7
MAINTENANCE & ADJUSTMENTS	8
STORAGE	9
PARTS	10 - 13
WARRANTY	14

CONGRATULATIONS!

Thank you for choosing the **REIST LANDSCAPER**. We feel confident that this equipment will meet your expectations in workmanship, reliability and performance.

This manual is to assist you with the safe operation of the **REIST LANDSCAPER**, This manual also identifies safety decals and information, maintenance intervals and proper storage instructions.

CAUTION



GENERAL SAFETY

1. **Careful operation is the best assurance against accidents. It is the owner's responsibility to make sure that all operator's read this manual before operating the equipment.**
2. **Familiarize yourself with all controls and always be ready to stop equipment quickly in case of emergency.**
3. **Never let a child operate machinery.**
4. **Protect yourself by wearing ear protection.**
5. **Hydraulic fluids under pressure can damage your skin. Do not use your hands to locate leak.**

OPERATING SAFETY



1. **For proper safe operation we recommend that the tractor be equipped with an approved Roll-Over Protective Structure and Safety Belt.**
2. **Do not operate an engine in confined or non ventilated area.**
3. **Do not perform any adjustments or repairs with engine running.**
1. **Always lower 3 PT hitch to ground before performing adjustments or repairs.**
2. **Do not operate on excessive incline and always be careful when turning on slopes.**
6. **Never carry passengers on implement or tractor.**

TRANSPORT SAFETY

CAUTION



1. **Use proper safety lights on public roads.**
2. **Be alert while driving on road and never carry passengers.**
3. **Road speed should be such to maintain full control over steering and brakes.**

Daily Check List



1. Make sure all bolts are tight (tighten if necessary).
2. Check for worn or broken parts (replace if necessary).
3. Grease bushings & bearings as instructed in Maintenance and Adjustment section.

OPERATION INSTRUCTIONS



Important Set Up & Operation Instructions

1. Always use proper pin & bushing sizes when attaching Landscaper to tractor.
2. Make sure that bottom 3 PTH arms are level w/ tractor & stabilized to center.
3. Lower Landscaper to ground, putting 3 PTH lever to max. down position.
4. Adjust top link until cutting edge makes ground contact, plus desired digging depth (approx. 1 to 2 cm).
5. With 3 PTH lever in max. down position start grading at 4 to 8 km per hour.
6. Readjust top link to maintain desired cutting depth.
7. Using this method of adjustment the Landscaper will remove high spots & fill in low spots.
8. For best results use alternative driving patterns as you grade.
9. If chatter occurs while grading SLOW DOWN.

Uses & Instructions

Ripper Attachment

The ripper attachment mounts to the front of the Landscaper ahead of the serrated cutting edge, and is adjustable from 5 cm above the cutting edge to 12 cm below. The ripper can be used in conjunction with all other settings on the Landscaper, or can be used solely with any desired setting.

USES:

- Lawn rejuvenations
- Hard packed soil
- Sub soil cultivation
- Equestrians surface rejuvenations.

Harrow Attachment

The harrow mounts behind the serrated cutting edge and in front of the pulveriser roll. The harrow can be used in conjunction with all other settings on the landscaper, or can be solely used with any desired setting. The harrow can be raised and lower with ratchet jack or a special hydraulic cylinder (part# CYL-S).

USES:

- Comb while levelling top soil.
- Soil conditioner while seeding (adjust harrow approx. 1 to 2 cm into soil).
- Drag brush & stones into a windrow.

Continued...

Brush Attachment

The brush attachment is normally used for grooming purposes.

The brush mounts to the back of the Landscaper, using the back two bearing mounting bolts to fasten the brush mounting brackets. To use lower the Landscaper and adjust top link so the serrated cutting edge is into the surface by 5 to 10 mm. By turning the two screw jacks lower the brush to the surface until a small amount of pressure is on the bristles. When set push the jack handles down to lock the set position. Groom at desired speed. If chatter occurs SLOW DOWN.

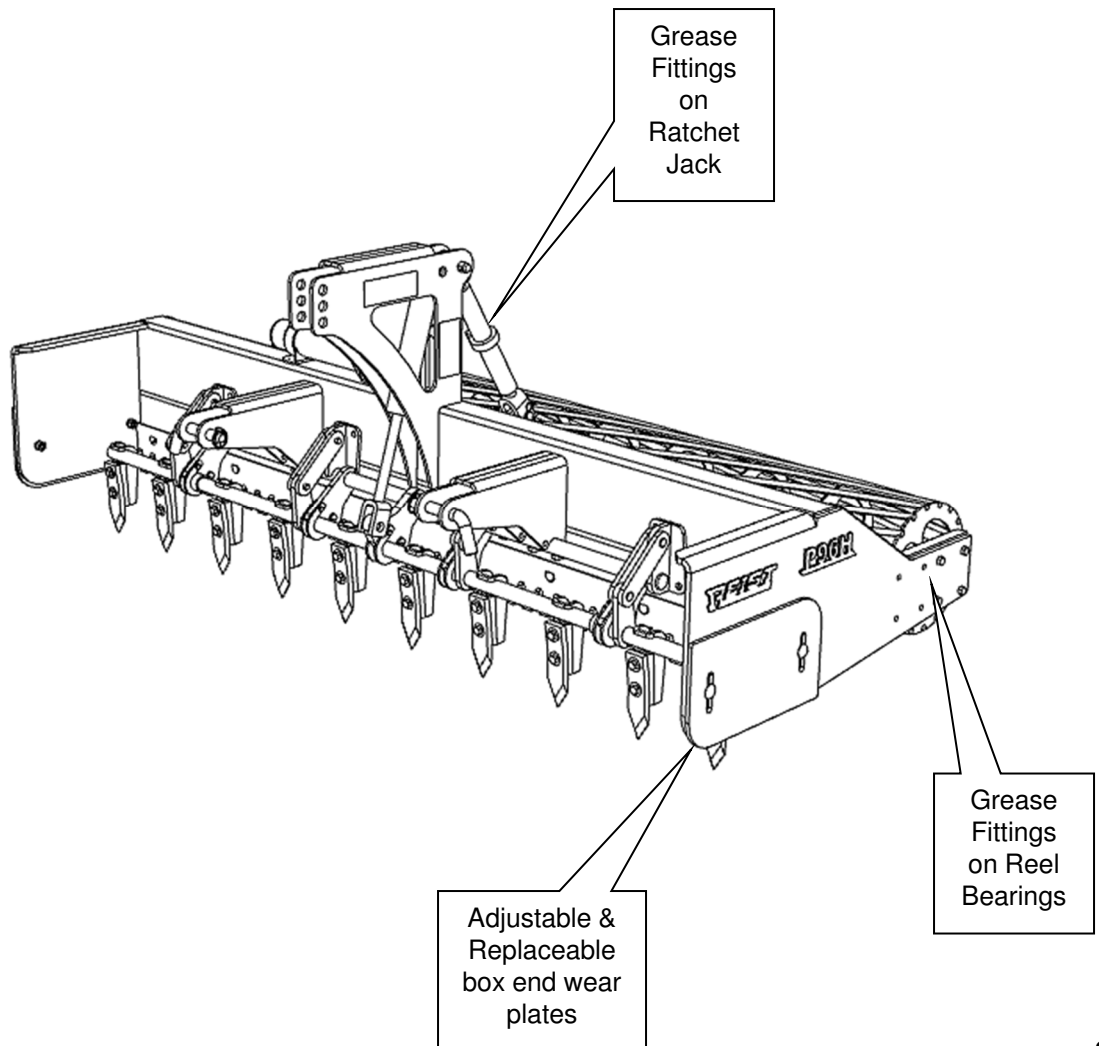
USES:

- Walking trails
- Ball diamonds
- Cart paths
- Equestrian

MAINTENANCE & ADJUSTMENTS



1. Clean grease fittings before adding grease to avoid injecting dirt and sand.
 2. Replace damaged grease fittings
 3. Lubricate reel bearings and ratchet jack after every 50 hours of use.
 4. Check all nuts and bolts after first hour of use and before each use.
 5. Check individual diamond tooth harrow mounting nuts after first hour of use and then before each use.
-
1. Adjust or replace wear plates at box ends as needed.
 2. Ratchet jacks adjust harrow and ripper to desired depth.

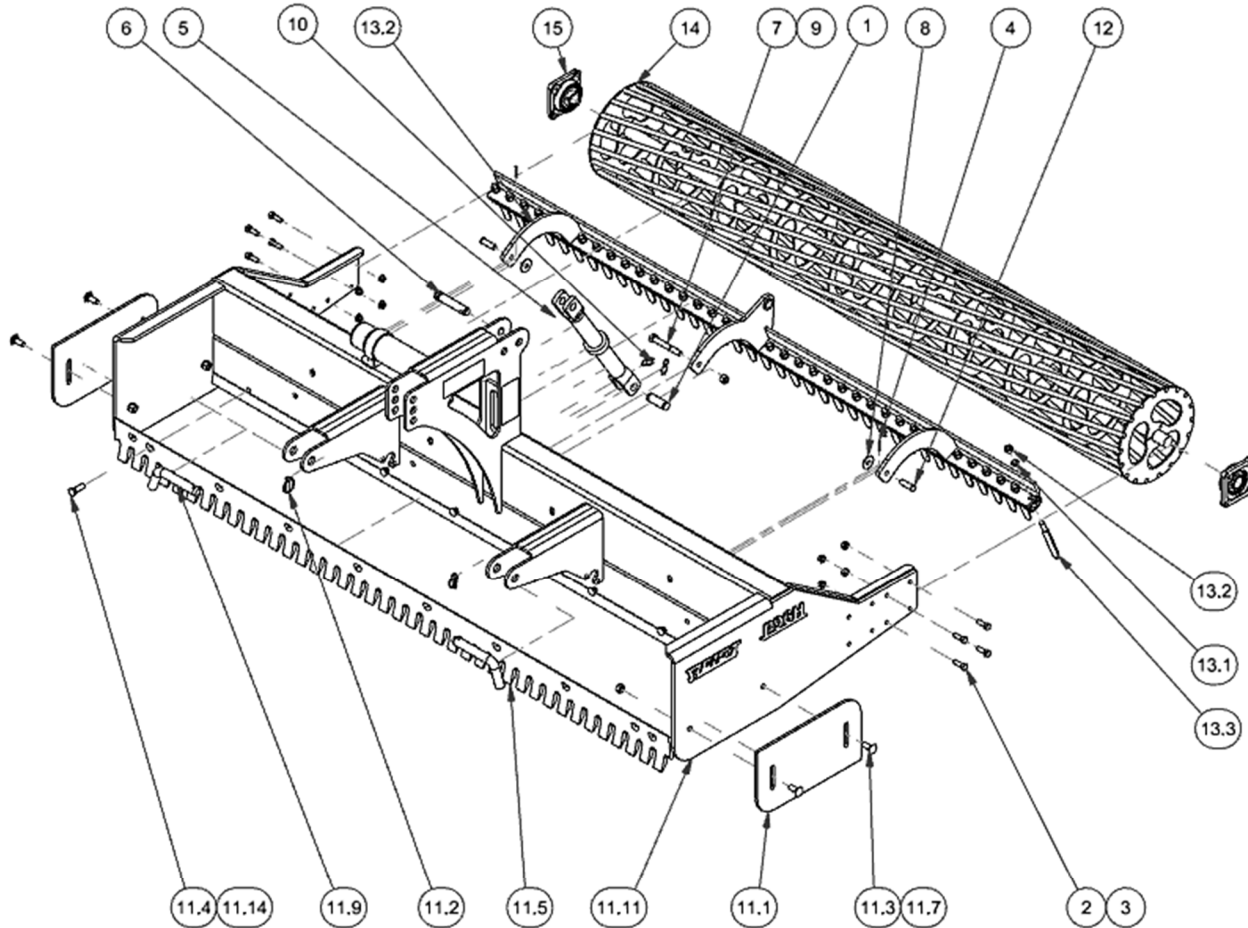


STORAGE



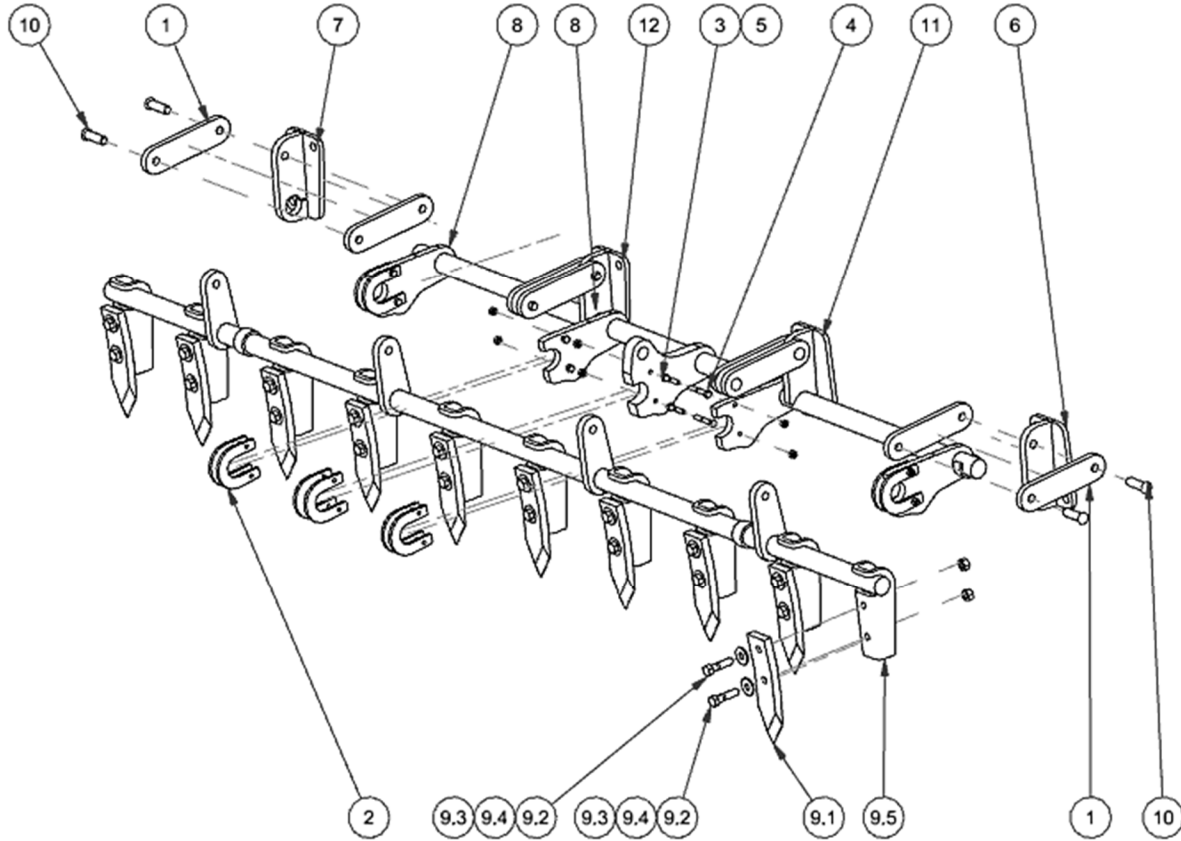
- 1.Store in dry ventilated area.**
- 2.Store any hydraulic cylinder piston rods in retracted position.**
- 3.Clean before putting into storage.**
- 4.Touch-up paint as needed.**
- 5.Lubricate all grease fittings before storage.**

Landscaper & Harrow Attachment



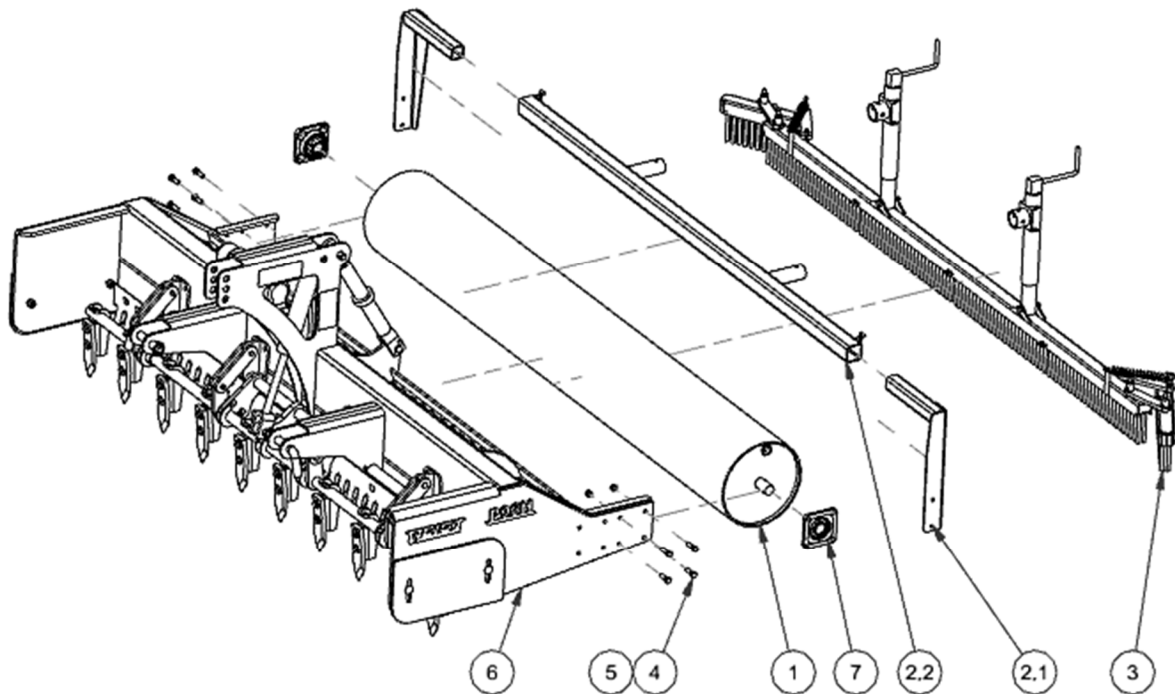
Parts List				Parts List			
ITEM	QTY	PART NUMBER	DESCRIPTION	ITEM	QTY	PART NUMBER	DESCRIPTION
1	1	100x225	Pin	11.6	4	58L	Lock Washer
2	8	12112	Hex Bolt	11.7	4	58N	Hex Nut
3	8	12FSLN	Flange Nut	11.8	1	67.222.000	Manual Holder
4	2	18114CP	Cotter Pin	11.9	2	CAT2-1185	Cat 2 Arm Pin
5	1	386501	Ratched Jack	11.10	1	DW103	Read Manual Decal
6	1	387505	Pin	11.11	1	F96H	Landscaper Weldment 96
7	1	58412	Hex Bolt	11.12	2	LD110	Landscaper Decal
8	2	58F	Flat Washer	11.13	1	Serial	Serial # Plate
9	1	58N	Hex Nut	12	2	B1803	5/8x2 Pin
10	2	637856	Hair Pin	13	1	H96	Harrow (96)
11.1	2	105357	Wear Plate	13.1	38	916L	Lock Washer
11.2	2	385507	7/16 Lynch Pin	13.2	38	916N	Hex Nut
11.3	4	58112C	Carriage Bolt	13.3	38	972824	9/16 Harrow Tooth
11.4	8	582PB	5/8 x2 Plow Bolt	14	1	R96	Rolling Harrow Reel
11.5	1	58681VS	Cutting Edge (8ft wide)	15	2	UCF208-108	4 Bolt Flange Bearing
11.14	8	58FSLN	Flange Nut				

Ripper Attachment



Parts List			
ITEM	QTY	PART NUMBER	DESCRIPTION
1	8	1003	Connector Link
2	10	1005	CLIP
11	1	105342	Left Hand Support
12	1	105346	Right Hand Support
6	1	105366	L.H. Mount
7	1	105367	R.H. Mount
8	1	105368	Rock Shaft
9	1	105369	Ripper Bar (96)
9.1	10	1009	5/8x2 Spike Tooth
9.5	1	105365	Tooth Bar Weldment
9.2	20	12*2	Hex Bolt
9.3	20	12F	Flat Washer
9.4	20	12N	Hex Nut
3	8	516112	Hex Bolt
4	2	5162	Hex Bolt
5	10	516N	Hex Nut
10	8	B1803	5/8x2 Pin

Broom Attachment

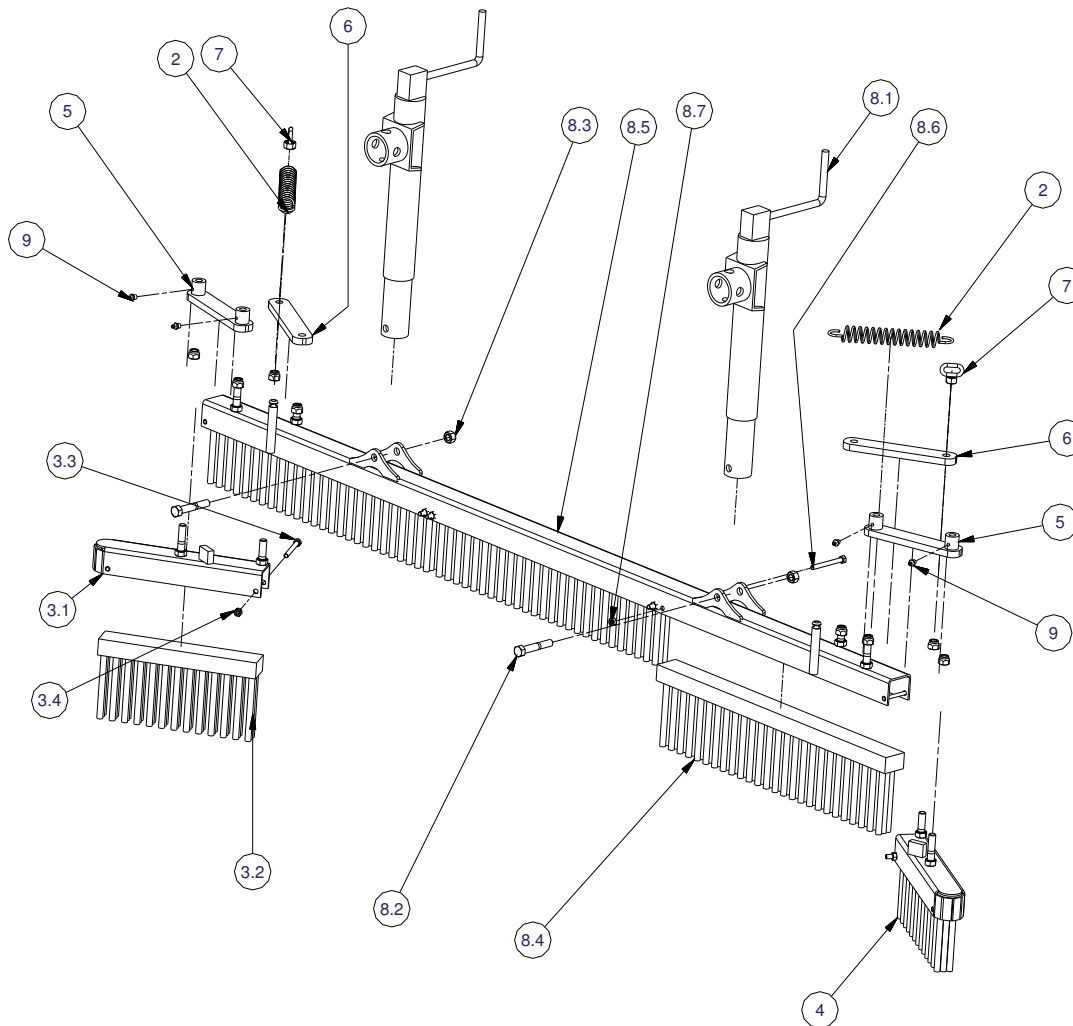


Parts List			
ITEM	QTY	PART NUMBER	DESCRIPTION
1	1	10541696	Smooth Roll Water Tank
2.1	1	1032	Broom Mount End Bracket
2.2	1	107834	Broom Mount Cross tube 96
3	1	107840	Broom Assembly 96
4	8	12134	Hex Bolt
5	8	12FSLN	Flange Nut
6	1	96inchH	LANDSCAPER Frame Assembly
7	2	UCF208-108	4 Bolt Flange Bearing

Broom Assembly



Broom Assembly



Parts List				Parts List			
ITEM	QTY	PART NUMBER	Discription	ITEM	QTY	PART NUMBER	Discription
1	8	12CLN	Lock Nut	7	2	2017	Spring Anchor
2	2	16148	Spring	8.1	2	10TWI	Brush adjustment Jack
3	1	2013	R.H. End Brush Holder	8.2	2	12*3	Bolt
3.1	1	1212	Hex Bolt	8.3	2	12N	Hex Nut
3.2	1	2012	End Brush	8.4	3	2010	Main Frame Brush
3.3	1	516*3	Bolt	8.5	1	2011	Main Brush Frame
3.4	1	516N	Hex Nuts	8.6	4	516*3	Bolt
4	1	2014	L.H. Brush Holder	8.7	4	516N	Hex Nuts
5	2	2015	Pivot Arm (with bushing)	9	4	GF	1/8 NPT ST Zerk
6	2	2016	Pivot Arm (without bushing)				

WARRANTY



All new Reist machinery is warranted to be free from defects in material or workmanship, which may cause failure under normal usage and service when used for the purpose, intended, for a period of 12 months. This warranty applies only to a new Reist product, there being no warranty of any nature in respect to new products that have been modified or altered, repaired, neglected, or used in any way, which, in the opinion of Reist adversely affects its performance.

In the event of failure of a part or parts, and upon inspection, Reist is satisfied that failure is due to defective material or workmanship within 12 calendar months, from the date of delivery to an end user, such defective part or parts will be repaired or replaced by Reist at his business location. It is the responsibility of the buyer, at his expense, to transport the machine or equipment to the manufacturer service shop or, to an authorized service depot or, alternatively, to reimburse Reist for any travel or transportation expense involved in fulfilling this warranty.

When requested by Reist, part or parts shall be returned for inspection, transportation prepaid, to a place designated by Reist. **IN NO EVENT SHALL THE BUYER BE ENTITLED TO RECOVER FOR INCIDENTAL OR CONSEQUENTIAL DAMAGES, INCLUDING, BUT NOT LIMITED TO, LOSS OF PRODUCT, INCONVENIENCE, RENTAL OR REPLACEMENT EQUIPMENT, LOSS OF PROFIT, OR OTHER COMMERCIAL LOSS.**

This warranty becomes void and null if the equipment is modified, breaks down as the result of an accident, is not operated according to manufacturers recommendations, damaged by negligence or if maintenance has not been carried out as specified.

THIS WARRANTY IS NOT TRANSFERABLE

Proof of Purchase

Date of purchase (yyyy mm dd)		Model		Serial #	
Dealer purchased from		City		State or Province	Country
First Name		Last Name		Phone # (include area code)	
Address				State or Province	Country
City	Postal Code	Reist Industries Inc. 100 Union St. Elmira Ontario N3B 2Z2		519-669-1501	

Proof of Purchase

Date of purchase (yyyy mm dd)		Model		Serial #	
Dealer purchased from		City		State or Province	Country
First Name		Last Name		Phone # (include area code)	
Address				State or Province	Country
City	Postal Code	Reist Industries Inc. 100 Union St. Elmira Ontario N3B 2Z2		519-669-1501	

**Reist Industries Inc. Ont.
100 Union St., Elmira
Ontario, Canada, N3B 2Z2
www.reistindustries.com**